

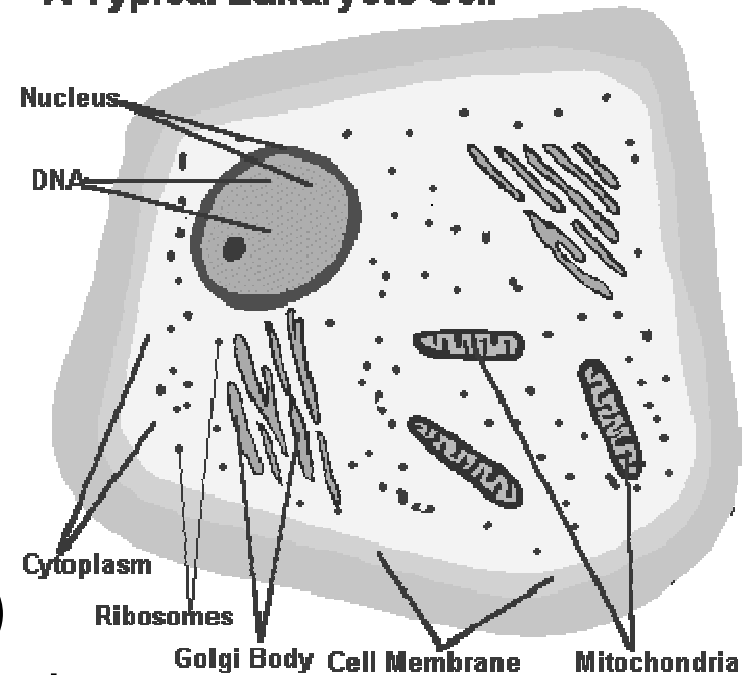
Hadley DNA Project

Brad Hadley – July 2009

Two Common Kinds of DNA Test

A Typical Eukaryote Cell

- y-chromosome
 - male has one x (from mother) and one y (from father)
 - a father can pass on either
 - an x to his daughter or a y to his son.
- mtDNA (mitochondrial DNA)
 - both male and females have it, but
 - only females pass it on*
 - mtDNA testing tell you about your female ancestors



* Now being debated. New Scientist August 2002

What's a "marker"

- A specific DNA sequence; a way of expressing DNA patterns as a number.
- The numbers don't mean anything by themselves, at least not for genealogy purposes.
- They are used to define matches among participants.
"Match" = exact, or one or two differences.
- The more "markers" the more detailed the information.

Why test our DNA?

- The DNA patterns on the y-chromosome (the male chromosome) is passed almost unchanged from father to son.
- If two people with the same surname match, they likely share a common ancestor.

But it CANNOT tell you who that is.

- Conventional genealogy research plus DNA can confirm or dispute relationships.

Example

- Jim and Brad's conventional research says they share a common ancestor, George Hadley born 1686 in Amesbury, MA.
- Their DNA test matches 12 of 12 markers, 24 of 25 markers, and 35 of 37 markers.

There is a 91.22% chance that we share a common ancestor within the past 12 generations, according to DNA.

- Combine the two and we are definitely related; and almost certainly both descended from George (b. 1686), and from George (16xx-1686).
- We should have more samples from other lines to be absolutely certain about George (16xx-1686).



History

- Started in 2003 with Jim and Brad
- 35 results so far, including Hadleys, Headleys, etc. from US, Canada, and UK
- Support of the Hadley Society (the Simon Hadley folk)
- Actively recruiting Headleys, Hedleys, Hatleys, etc. now.

What have we learned?

- George Hadley and Simon Hadley do not share a common ancestor.
 - Lots of descendants from each
 - The Simon Hadleys match each other;
The George Hadleys match each other;
The two sets don't match.
- Joseph Hadley of Yonkers shares a common ancestor with George.
Likely was his son.
But we have only one sample; need more.

Exciting Recent Development!

- Participant 145599 matches Brad 12/12, 25/25, and 35/37
- The surname is Headley
- The most recent known ancestor is Francis Headley, born abt 1800 in PA or OH.
- We believe/hope that Francis is **not** descended from George.
- Why do we hope that?

Why hope Francis not descended from George?

- The DNA test results say Brad and 145599 share a common ancestor.
- Brad is descended from George, 145599 is descended from Francis.
- If the common ancestor is not George or one of his descendants, the common ancestor is further back.
- By confirming the ancestry back to Francis and then researching Francis's ancestry, we may find George's parents, or cousins, or uncles etc.

The English Project

- Note: We have lost our benefactor who had committed to fund more English Hadleys
- The concept:
 - Find a descendant of a Hadley line that stayed in England, who matches George's pattern.
 - Research their ancestry
 - Find where our George splits from their line i.e. find where a George in their line disappears around 1630.

The English Project (cont.)

- We've got several UK Hadleys in the results.
- None match the George Hadley pattern.
- A couple match the Simon Hadley pattern. They are working on those lines now, but haven't made much progress yet.

What's next?

- We need more participants, particularly:
 - Lines not yet represented
 - UK Hadleys
 - Hadleys from other countries
- We need to do more conventional research on current participants.
- Special pricing through July 30:
\$119 for y-DNA37.
See order link at hadleydna.org